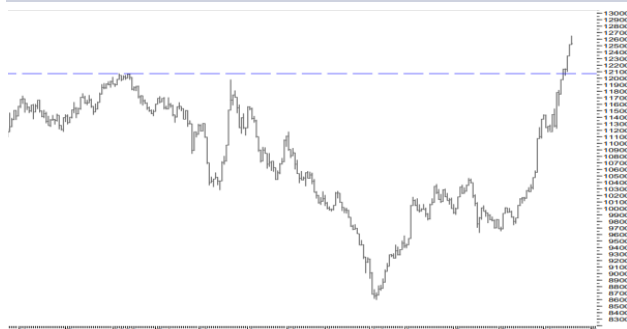


EGX 30 Index



EGX 70 EW Index



- Since 12 October 2022, the last upward wave continued still, heading towards the next resistance level of 13,000.
- Short-term traders should consider the support zone of 12,100-12,000 as a trailing-stop. If the index violates the abovementioned support zone, this will be considered as a first signal to start a postponed correction wave.
- The index is moving towards its resistance zone of 2,450-2,500, representing the target of symmetrical triangle bullish pattern.

Index	Trend	Support 2	Support 1	Last	% Change	Resistance 1	Resistance 2	Turnover (EGPmn)
EGX 30	↑	12,000	12,100	12,523.84	+0.06%	13,000	14,000	745
EGX 70 EWI	↑	2,310	2,360	2,408.41	+0.84%	2,450	2,500	527

Near-term recommendations

Code	Strategy	Proposed entry zone	Final entry price	Last price	TP	SL	RR ratio*	Position opened on	Exit date	Realized return %
N/A	N/A									

Short-term recommendations

Code	Strategy	Proposed entry zone	Final entry price	Last price	TP	SL	RR ratio*	Position opened on	Exit date	Realized return %
CCAP	Hold a long position		1.320	1.357	1.45	1.26		16-Nov-22		
EKHOA	Hold a short position		27.750	29.16	23.00	30.00	2.0	13-Nov-22		
ABUK	Sell rallies	29.500 — 32.00		29.810	25.50	33.00	2.3	16-Nov-22		

Medium-term recommendations

Code	Strategy	Proposed entry zone	Final entry price	Last price	TP	SL	RR ratio*	Position opened on	Exit date	Realized return %
N/A	N/A									

Long-term recommendations

Code	Strategy	Proposed entry zone	Final entry price	Last price	TP	SL	RR ratio*	Position opened on	Exit date	Realized return %
N/A	N/A									

* RR ratio = Return / Risk Ratio at proposed entry zone.

★ Denotes new actions for today.

Mohamed Khedr CFTe, MFTA | Senior Technical Analyst
mkhedr@egy.primegroup.org



EGX 100+ Constituents

Code	ST	Strategy	Entry zone	Final entry price	TP	SL	Sup. zone	Last	Res. zone	Return/ risk ratio at entry	Position opened on	Exit date	Realized return %
ABUK	↑	Sell rallies	29.50 — 32.00		25.50	33.00	29-28 27-26	29.810 29.450	31-32 29.5-30	2.3	16-Nov-22		
ACAMD	↓	N/A			--	--	0.50 --	0.430 0.409	0.45-0.49 0.42-0.45				
ACGC	↑	N/A			--	--	3.2-3 --	3.320 3.360	3.5-3.8 --				
ADIB	↔	N/A			--	--	13.5-13 13-12	13.670 13.690	14-15 14.5-15				
AFMC	↑	N/A			--	--	11-10.2 11-10	10.790 11.250	12-13 --				
AIFI	↓	N/A			--	--	0.24-0.22 0.23-0.22	0.248 0.241	0.25-0.275 0.275-0.285				
AIH	↑	N/A			--	--	0.353-0.346 0.34-0.33	0.362 0.355	0.37-0.4 0.4-0.42				
AJWA	↑	N/A			--	--	17.7-17 16-15	17.750 17.490	18-20 --				
ALCN	↑	N/A			--	--	12-11 11-10.5	13.050 13.020	13.5-14 --				
AMER	↔	N/A			--	--	0.722-0.7 0.7-0.66	0.743 0.750	0.778-0.85 0.8-0.85				
AMIA	↔	N/A			--	--	1.74-1.6 1.5-1.25	1.771 1.753	1.9-2 1.8-2				
AMOC	↑	N/A			--	--	4.1-4 --	4.190 4.220	4.3-4.5 4.4-4.5				
ARAB	↔	N/A			--	--	0.39-0.36 0.365-0.32	0.399 --	0.4-0.43 --				
ARCC	↑	N/A			--	--	5.6-5.2 5.2-5	5.750 5.600	6.2-6.5 --				
AREH	↓	N/A			--	--	1.27-1.05 --	1.303 1.371	1.47-1.685 --				
ASCM	↔	N/A			--	--	7-6.5 --	7.500 7.600	8-8.6 7.5-8				
ASPI	↔	N/A			--	--	0.235-0.22 --	0.259 0.251	0.28-0.29 --				
ATLC	↔	N/A			--	--	3.3-3.2 3.2-3	3.470 3.490	3.7-4.4 3.6-4.4				
ATQA	↑	N/A			--	--	1-0.95 --	1.060 1.057	1.08-1.25 1.15-1.2				
AUTO	↔	N/A			--	--	4.2-3.9 --	4.310 4.300	4.7-5.2 4.7-4.8				
BTFH	↑	N/A			--	--	3.6-3.4 3.3-3.2	3.700 3.680	3.9-4.2 3.6-4				
CCAP	↔	Hold a long position Buy		1.32	1.45	1.26	1.34-1.32 --	1.357 1.356	1.38-1.45 1.45-1.5		16-Nov-22		
CCRS	↔	N/A			--	--	10.9-9.9 --	12.640 --	13-15 --				
CICH	↑	N/A			--	--	4.6-4.5 --	4.630 4.600	5-5.2 --				
CIEB	↑	N/A			--	--	8-7.6 6.7-6.6	8.000 7.850	9-10 7.5-8				

Notes:

- Grey rows illustrate the previous day's data for each stock in case of changes, and the grey color indicates the changes.
- Check [Stock Tickers](#) for the full company names of all tickers.



EGX 100+ Constituents (Continued)

Code	ST	Strategy	Entry zone	Final entry price	TP	SL	Sup. zone	Last	Res. zone	Return/ risk ratio at entry	Position opened on	Exit date	Realized return %
CIRA	↔	N/A			--	--	12.7-12.3	12.710	14.2-14.8				
							11.6-10.5	13.190	14.5-15				
CLHO	↔	N/A			--	--	4.4-4.3	4.410	4.8-5				
							--	4.600	--				
CNFN	↓	N/A			--	--	2.8-2.5	3.100	3.1-3.25				
							--	2.950	--				
COMI	↔	N/A			--	--	37-36	37.400	38.5-40				
		Stop loss			--	37.00	--	37.340	--				
COSG	↓	N/A			--	--	0.16-0.14	0.183	0.189-0.2				
							0.16-0.1	0.167	0.2-0.3				
CSAG	↑	N/A			--	--	17.5-16.4	19.710	20-23				
							17-16	18.840	--				
DAPH	↑	N/A			--	--	24-22.5	24.700	27-28				
							20.5-18.5	24.050	24.5-25				
DCRC	↑	N/A			--	--	17-16	18.470	20-22				
							--	--	--				
DOMT	↑	N/A			--	--	4.6-4.25	5.150	5.5-6				
							--	5.020	--				
DSCW	↑	N/A			--	--	0.367-0.34	0.376	0.393-0.4				
							0.36-0.34	0.373	--				
EAST	↑	N/A			--	--	13.5-12.5	14.750	15-16				
							--	14.600	--				
ECAP	↑	N/A			--	--	12.5-12	12.300	13-13.88				
							10.5-9.5	12.290	12-12.5				
EDBM	↔	N/A			--	--	0.35-0.335	0.350	0.363-0.4				
							--	0.359	--				
EEII	↔	N/A			--	--	1.07-0.95	1.118	1.15-1.27				
							--	1.135	--				
EFIC	↑	N/A			--	--	27.6-25	28.750	31-34				
							27-25	28.340	30-31				
EFID	↑	N/A			--	--	12.4-11	12.700	13.5-15.5				
							11-10.15	12.860	13.5-15				
EGAL	↑	N/A			--	--	30-28	30.870	31.6-33				
							--	31.220	33-35				
EGCH	↔	N/A			--	--	4.3-4.17	4.600	4.8-5				
							--	4.550	--				
EGTS	↔	N/A			--	--	1.5-1.25	1.720	1.8-2				
							--	1.742	--				
EHDR	↓	N/A			--	--	0.35-0.3	0.363	0.4-0.44				
							--	--	--				
EKHO	↔	N/A			--	--	1.2-1.14	1.212	1.25-1.3				
							--	1.209	--				
ELEC	↑	N/A			--	--	0.4-0.38	0.430	0.45-0.48				
							--	0.410	--				
ELNA	↓	N/A			--	--	21.77-21	22.940	24-25				
							21-15	21.850	22-24				
ELSH	↑	N/A			--	--	5.9-5.45	6.170	6.3-6.77				
							5.45-5	6.050	6-6.3				
ELWA	↔	N/A			--	--	0.41-0.37	0.428	0.43-0.46				
							--	0.425	--				

Notes:

- Grey rows illustrate the previous day's data for each stock in case of changes, and the grey color indicates the changes.
- Check [Stock Tickers](#) for the full company names of all tickers.



EGX 100+ Constituents (Continued)

Code	ST	Strategy	Entry zone	Final entry price	TP	SL	Sup. zone	Last	Res. zone	Return/risk ratio at entry	Position opened on	Exit date	Realized return %
EMFD	↔	N/A			--	--	2.7-2.55 2.45-2.3	2.680 2.690	2.9-3.1 2.7-2.85				
ESRS	↑	N/A			--	--	17-15 --	16.860 17.150	18-19 --				
ETEL	↑	N/A			--	--	21.3-20 22-20	21.540 22.060	22.44-23 24-25				
ETRS	↔	N/A			--	--	2.26-2.05 2.1-1.8	2.410 2.280	2.44-2.62 2.3-2.44				
EXPA	↑	N/A			--	--	9.1-8.8 --	9.520 9.590	10-10.5 --				
FAIT	↑	N/A			--	--	16-14.5 --	17.370 17.040	18-20 --				
FAITA	↓	N/A			--	--	0.9-0.85 --	0.995 0.994	1-1.1 --				
FWRV	↔	N/A			--	--	4.3-4.1 --	4.380 4.370	4.7-5 --				
GDWA	↑	N/A			--	--	0.694-0.654 0.64-0.62	0.771 0.658	0.77-0.92 0.68-0.7				
GGCC	↔	N/A			--	--	0.287-0.27 0.26-0.24	0.293 0.290	0.31-0.33 0.29-0.31				
GOCO	↔	N/A			--	--	0.33-0.3 --	0.335 0.336	0.36-0.38 --				
HDBK	↑	N/A			--	--	12-11 --	12.400 12.360	13-15 --				
HELI	↔	N/A			--	--	5.45-5 --	5.840 5.880	6-6.2 --				
HRHO	↑	N/A			--	--	13.17-12.7 12.5-12.2	13.510 13.500	13.85-14.5 14-15				
IDRE	↔	N/A			--	--	22-20 --	21.890 23.040	25-28 --				
IFAP	↑	N/A			--	--	4.1-4 --	4.550 4.470	4.5-4.6 --				
IRAX	↑	N/A			--	--	650-625 --	690.00 698.000	750-800 --				
IRON	↑	N/A			--	--	6-5 --	6.440 6.140	6.5-7 --				
ISMA	↑	N/A			--	--	5.5-5 --	6.050 6.060	6.3-6.5 --				
ISPH	↓	N/A			--	--	1.8-1.75 1.75-1.7	1.849 1.850	1.9-2 --				
JUFO	↔	N/A			--	--	6.5-5.5 --	7.200 --	7.5-8 --				
KABO	↑	N/A			--	--	0.94-0.89 0.8-0.77	0.970 0.910	1-1.1 0.94-1				
MCQE	↑	N/A			--	--	15-14 --	17.000 16.900	17-19 --				
MENA	↔	N/A			--	--	0.88-0.8 --	0.940 0.936	0.987-1.05 --				
MEPA	↑	N/A			--	--	0.38-0.36 --	0.395 0.392	0.4-0.45 --				

Notes:

- Grey rows illustrate the previous day's data for each stock in case of changes, and the grey color indicates the changes.
- Check [Stock Tickers](#) for the full company names of all tickers.



EGX 100+ Constituents (Continued)

Code	ST	Strategy	Entry zone	Final entry price	TP	SL	Sup. zone	Last	Res. zone	Return/risk ratio at entry	Position opened on	Exit date	Realized return %
MFPC	↑	N/A					120-113	124.180	132-135				
					--	--	100-92	119.890	120-130				
MICH	↑	N/A					15-13.5	16.100	17-18				
					--	--	--	16.020	--				
MNHD	↑	N/A					2.75-2.6	2.930	3.2-3.3				
					--	--	--	2.950	--				
MOIL	↑	N/A					0.1-0.09	0.116	0.115-0.125				
					--	--	--	0.118	--				
MPCO	↔	N/A					0.96-0.85	1.072	1.07-1.15				
					--	--	--	1.078	--				
MPRC	↔	N/A					5.5-5.2	6.000	6.2-6.6				
					--	--	--	5.960	--				
MTIE	↑	N/A					4.2-4	4.240	4.6-5				
					--	--	--	4.350	--				
NCCW	↑	N/A					15.7-14.7	16.840	17.5-20				
					--	--	--	17.080	--				
NEDA	↑	N/A					2-1.9	2.220	2.4-2.6				
					--	--	--	2.160	--				
NRPD	↑	N/A					30-28	32.650	35-40				
					--	--	27-25	27.850	28-30				
OCDI	↑	N/A					12-10.7	12.610	13-14				
					--	--	--	12.530	--				
OIH	↔	N/A					0.21-0.2	0.215	0.22-0.23				
					--	--	--	0.214	--				
OLFI	↔	N/A					6.5-6	6.800	7-7.5				
					--	--	--	6.880	--				
ORAS	↑	N/A					75-72	76.490	81-84				
					--	--	--	76.900	80-83				
ORHD	↑	N/A					6.13-6	6.300	6.6-7.5				
					--	--	5.7-5.2	6.350	6.6-7				
ORWE	↑	N/A					7.4-7	7.510	8-8.5				
					--	--	--	7.570	--				
PACH	↑	N/A					23-20	24.580	25-27				
					--	--	--	24.540	--				
PHAR	↑	N/A					33-32	33.600	35-37				
	↓				--	--	30-28	32.940	33-35				
PHDC	↑	N/A					1.565-1.468	1.630	1.75-2				
					--	--	1.45-1.4	1.628	1.55-1.65				
POUL	↑	N/A					2.3-2.2	2.500	2.6-2.8				
					--	--	--	2.480	--				
PRCL	↑	N/A					3.4-3.3	3.770	3.8-4				
					--	--	--	3.720	--				
PRDC	↔	N/A					1.6-1.4	1.837	1.8-2				
					--	--	--	1.801	--				
QNBA	↔	N/A					15-14	15.130	17-19				
					--	--	--	15.100	--				
RACC	↑	N/A					2.5-2.4	2.610	3-3.7				
					--	--	--	2.590	--				
RMDA	↑	N/A					3-2.8	3.040	3.2-3.4				
					--	--	--	3.050	--				
ROTO	↑	N/A					22-20	22.890	23-25				
					--	--	24-22	24.090	27-30				

Notes:

- Grey rows illustrate the previous day's data for each stock in case of changes, and the grey color indicates the changes.
- Check [Stock Tickers](#) for the full company names of all tickers.



EGX 100+ Constituents (Continued)

Code	ST	Strategy	Entry zone	Final entry price	TP	SL	Sup. zone	Last	Res. zone	Return/risk ratio at entry	Position opened on	Exit date	Realized return %
RTVC	↑	N/A					2.3-2.2	2.580	2.7-2.8				
					--	--	--	2.490	--				
SKPC	↔	N/A					8.4-8	8.620	9-9.5				
					--	--	--	8.650	--				
SNFC	↓	N/A					0.7-0.6	0.808	0.8-0.84				
					--	--	--	0.799	--				
SPMD	↔	N/A					0.46-0.44	0.446	0.46-0.492				
					--	--	--	0.450	--				
SVCE	↓	N/A					1.2-1	1.350	1.4-1.5				
					--	--	--	1.310	--				
SWDY	↔	N/A					8.8-8.7	9.200	10-12				
					--	--	--	8.900	9-10				
TMGH	↑	N/A					8.2-8	8.500	9-9.5				
					--	--	--	8.570	--				
UASG	↑	N/A					0.75-0.7	0.772	0.83-0.9				
					--	--	--	0.755	--				
UEGC	↓	N/A					0.58-0.56	0.633	0.6-0.65				
					--	--	--	0.603	--				
UNIP	↑	N/A					0.63-0.6	0.656	0.7-0.8				
					--	--	--	0.650	--				
UNIT	↑	N/A					3-2.85	3.200	3.15-3.3				
					--	--	--	3.110	--				
ZEOT	↑	N/A					1.7-1.5	1.743	1.85-2				
	↓				--	--	1.5-1.35	1.670	1.7-2				
ZMID	↓	N/A					4.5-4.18	5.010	5-5.25				
					--	--	--	4.960	--				

Notes:

- Grey rows illustrate the previous day's data for each stock in case of changes, and the grey color indicates the changes.
- Check [Stock Tickers](#) for the full company names of all tickers.

Stock Tickers

Ticker	Company Name	Ticker	Company Name
ABUK	Abu Kir Fertilizers & Chemicals	FWRY	Fawry
ACAMD	Arab Co. for Asset Management & Dev.	GDWA	Gadwa Industrial Development
ACGC	Arab Cotton Ginning	GGCC	Giza General Contracting
ADIB	Abu Dhabi Islamic Bank Egypt	GOCO	Golden Coast
AFMC	Alexandria Flour Mills	HDBK	Housing & Development Bank
AIFI	Atlas for Inv. & Food Industries	HELI	Heliopolis Housing & Development
AIH	Arabia Investments Holding	HRHO	EFG Hermes Holding
AJWA	Ajwa for Food Industries	IDRE	New Ismailia for Urban Development
ALCN	Alexandria Containers Handling	IFAP	International Agricultural Products
AMER	Amer Group Holding	IRAX	El-Ezz Aldekhela Steel Alexandria
AMIA	Arab Moltaqa Investments	IRON	Egyptian Iron & Steel
AMOC	Alexandria Mineral Oils	ISMA	Ismailia Misr Poultry
ARAB	Arab Developers Holding	ISPH	Ibnsina Pharma
ARCC	Arabian Cement	JUFO	Juhayna Food Industries
AREH	Real Estate Egyptian Consortium	KABO	El-Nasr Clothes & Textiles
ASCM	ASEC Co. for Mining (ASCOM)	MCQE	Misr Cement (Qena)
ASPI	Aspire Capital Holding	MENA	Mena Touristic & Real Estate
ATLC	AT Lease	MEPA	Medical Packaging
ATQA	Misr National Steel (Ataqa)	MFPC	MOPCO
AUTO	GB Auto	MICH	Misr Chemical Industries
BTFH	Beltone Financial Holding	MNHD	Madinet Nasr Housing & Development
CCAP	Qalaa Holdings	MOIL	Maridive & Oil Services
CCRS	Gulf Canadian	MPCO	Mansoura Poultry
CICH	CI Capital Holding	MPRC	Egyptian Media Production City
CIEB	Credit Agricole Egypt	MTIE	MM Group for Industry & International Trade
CIRA	Cairo Investment & Real Estate Development	NCCW	Nasr Co. for Civil Works
CLHO	Cleopatra Hospitals Group	NEDA	Northern Upper Egypt Development
COMI	Commercial International Bank (CIB)	NRPD	National RE Bank for Dev.
CNFN	Contact Capital Holding	OCDI	SODIC
COSG	Cairo Oils & Soap	OIH	Orascom Investment Holding
CSAG	Canal Shipping Agencies	OLFI	Obour Land Food Industries
DAPH	Dev. & Engineering Consultancies	ORAS	Orascom Construction
DCRC	Delta Construction	ORHD	Orascom Development Egypt
DOMT	Arabian Food Industries (Domty)	ORWE	Oriental Weavers Carpet
DSCW	Dice Sport & Casual Wear	PACH	PACHIN
EAST	Eastern Company	PHAR	EIPICO
ECAP	Al-Ezz Ceramics & Porcelain	PHDC	Palm Hills Developments
EDBM	Egyptian for Developing Building	POUL	Cairo Poultry
EEII	El-Arabia Engineering Industries	PRCL	Sheeni
EFIC	Egyptian Financial & Industrials	PRDC	Pioneers Properties Urban Development
EFID	Edita Food Industries	QNBA	Qatar National Bank Alahly
EGAL	Egypt Aluminum	RACC	Raya Contact Center
EGCH	KIMA	RMDA	Rameda
EGTS	Egyptian Resorts Co.	ROTO	Rowad Tourism
EHDR	Egyptians for Housing & Development	RTVC	Remco for Touristic Villages
EKHO	Egypt Kuwait Holding	SKPC	Sidi Kerir Petrochemicals
ELEC	Egyptian Electrical Cables	SNFC	Sharkia National Food Co.
ELNA	El-Nasr for Manufacturing Agricultures	SPMD	Speed Medical
ELSH	El-Shams Housing & Development	SVCE	South Valley Cement
ELWA	El-Wadi for Touristic Investments	SWDY	Elsewedy Electric
EMFD	Emaar Misr for Development	TMGH	TMG Holding
ESRS	Ezz Steel	UASG	United Arab Shipping
ETEL	Telecom Egypt	UEGC	Elsaeed Contracting & RE Inv.
ETRS	Egytrans	UNIP	Unipack
EXPA	Export Development Bank of Egypt	UNIT	United Co for Housing & Developments
FAIT	Faisal Islamic Bank of Egypt (EGP)	ZEOT	Extracted Oils
FAITA	Faisal Islamic Bank of Egypt (USD)	ZMID	Zahraa El-Maadi Investment

Note: Please refer to **Guidelines** on [Page 8](#) for the relevant definitions.



Guidelines

Timeframe

- **Near Term:** 1-5 trading sessions
- **Short Term:** 1-4 weeks
- **Medium Term:** 1-3 months
- **Long Term:** More than 3 months

Zones & Levels

- **Resistance zone:** It is the price zone at which the price of a stock meets pressure on its way up with the emergence of a growing number of sellers who wish to sell at that price zone.
- **Support zone:** It represents a price zone that a stock struggles not to fall below in a given period of time.
- **Entry zone:** It is the suggested buy or sell zone.
- **Final entry price:**
 - **Long position:** Average of the upper level in the entry zone and the lower level that the stock has achieved before changing the strategy from "Buy" or "Buy dips" to "Hold a long position".
 - **Short position:** Average of the lower level in the entry zone and the highest level that a stock has achieved before changing the strategy from "Sell" or "Sell rallies" to "Hold a short position".
- **Exit level:**
 - **Long position:**
 - If the strategy is "Take profit", the exit level will be the target price.
 - If the strategy is "Take profit within resistance zone", the exit level will be the average of the lower level in the resistance zone and the highest level that the stock has traded at during the session.
 - If the strategy is "Stop loss", the exit level will be the stop-loss level.
 - **Short position:**
 - If the strategy is "Take profit", the exit level will be the target price.
 - If the strategy is "Take profit within support zone", the exit level will be the average of the higher level in the support zone and the lower level that the stock has traded at during the session.
 - If the strategy is "Stop loss", the exit level will be the stop-loss level.

Strategies

- **Buy:** Buy if the stock is trading within the entry zone.
- **Buy dips:** If the stock is trading above the entry zone, buy only when it trades within the entry zone.
- **Hold a long position:** Hold a long position after buying.
- **Hold a short position:** Hold a short position after selling.
- **Take profit:** Exit when the stock achieves the target price.
- **Take profit within R zone:** Exit a long position at the exit level explained above.
- **Take profit within S zone:** Exit a short position at the exit level explained above.
- **Stop loss:** Exit when the stock achieves the stop-loss level.
- **Sell:** Sell if the stock is trading within the entry zone.
- **Sell rallies:** If the stock is trading below the entry zone, sell only when it trades within the entry zone.

Return Calculation

- **Realized return or loss:** The difference between the target price (stop-loss level) and the final entry level as a percentage of the entry level.

Prime Securities

Shawkat El Maraghy

Managing Director

T +202 3300 5622

SElmaraghy@egy.primegroup.org

Sales

Mohamed Ezzat

Head of Sales & Branches

T +202 3300 5784

MEzzat@egy.primegroup.org

Mohamed Ashmawy

Head of Institutional Sales

T +202 3300 5612

MAshmawy@egy.primegroup.org

Amr Alaa CFTe

Team Head –Institutional Desk

T +202 3300 5609

AAlaa@egy.primegroup.org

Mohamed El Metwaly

Manager

T +202 3300 5610

MElmetwaly@egy.primegroup.org

Emad El Safoury

Manager

T +202 3300 5624

EElsafoury@egy.primegroup.org

Shawkat Raslan

Heliopolis Branch Manager

T +202 3300 8130

SRaslan@egy.primegroup.org

Nashwa Abuelatta

Alexandria Branch Manager

T +202 3300 5173

NAbuelatta@egy.primegroup.org

Research

Amr Hussein Elalfy CFA

Head of Research

T +202 3300 5724

AElalfy@egy.primegroup.org

Head Office

Prime Securities S.A.E.

Regulated by FRA License No. 179.
Member of the Egyptian Exchange.

2 Wadi Elnil St., Liberty Tower, 7th Fl.
Mohandessin, Giza, Egypt

T +202 3300 5700 / 770 / 650 / 649

F +202 3760 7543

Branches

Heliopolis

7 Elhegaz Square

Heliopolis, Cairo, Egypt

T +202 2777 0600

F +202 2777 0604

Alexandria

7 Albert Al Awal St.

Smouha, Alexandria, Egypt

T +202 3300 8170

F +202 3305 4622

Website

www.primeholdingco.com

Disclaimer

Information included in this report has no regard to specific investment objectives, financial situation, advices or particular needs of the report users whether they received them directly or through any research pool and other specialized websites. The report is published for information purposes only and is not to be construed as a solicitation or an offer to buy or sell any securities or related financial instruments. Unless specifically stated otherwise, all price information is only considered as indicator. No express or implied representation or guarantee is provided with respect to completeness, accuracy or reliability of information included in this report. Past performance is not necessarily an indication of future results. Fluctuation of foreign currency rates of exchange may adversely affect the value, price, or income of any products mentioned in this report. Information included in this report should not be regarded by report users as a substitute for the exercise of their own due diligence and analysis based on own assessment and judgment criteria. Any opinions given are subject to change without notice and may significantly differ or be contrary to opinions expressed by other Prime business areas as a result of using different assumptions and criteria. Prime Group is under no obligation responsible to update or keep current the information contained herein. Prime Group, its directors, officers, employees or clients may have or have had interests or long or short positions in the securities and/or currencies referred to herein, and may at any time make purchases and/or sales in them as principal or agent. Prime Group, its related entities, directors, employees, and agents accept no liability whatsoever for any loss or damage of any kind arising from the use of all or part of these information included in this report whether it is received directly or through research pools and other specialized websites. Certain laws and regulations impose liabilities which cannot be disclaimed. This disclaimer shall, in no way, constitute a waiver or limitation of any rights a person may have under such laws and/or regulations. Furthermore, Prime Group or any of the group companies may have or have had a relationship with or may provide or have provided other services, within its objectives to the relevant companies.

Copyrights © 2022, Prime Group, ALL RIGHTS RESERVED. You are hereby notified that distribution and copying of this document is strictly prohibited without the prior approval of Prime Group.